



2019

21-23 JUNE

SAN FRANCISCO

SUPPORTIVE CARE
MAKES EXCELLENT
CANCER CARE POSSIBLE

Parallel Session 11: Complications of Immunotherapy

MASCC/ISOO

Annual Meeting on Supportive Care in Cancer

www.mascc.org/meeting

Follow us on Twitter: @CancerCareMASCC



#MASCC19

Agenda

Basic Mechanisms: B Rapoport, Rosebank

Recommendations: M Postow, MSKCC

Emergencies: T Cooksley, Manchester UF

GI Toxicities: M Dougan, MGH

Rheumatologic Toxicities: A Bass, HSS

Conclusion, Q&A: All Faculty



2019

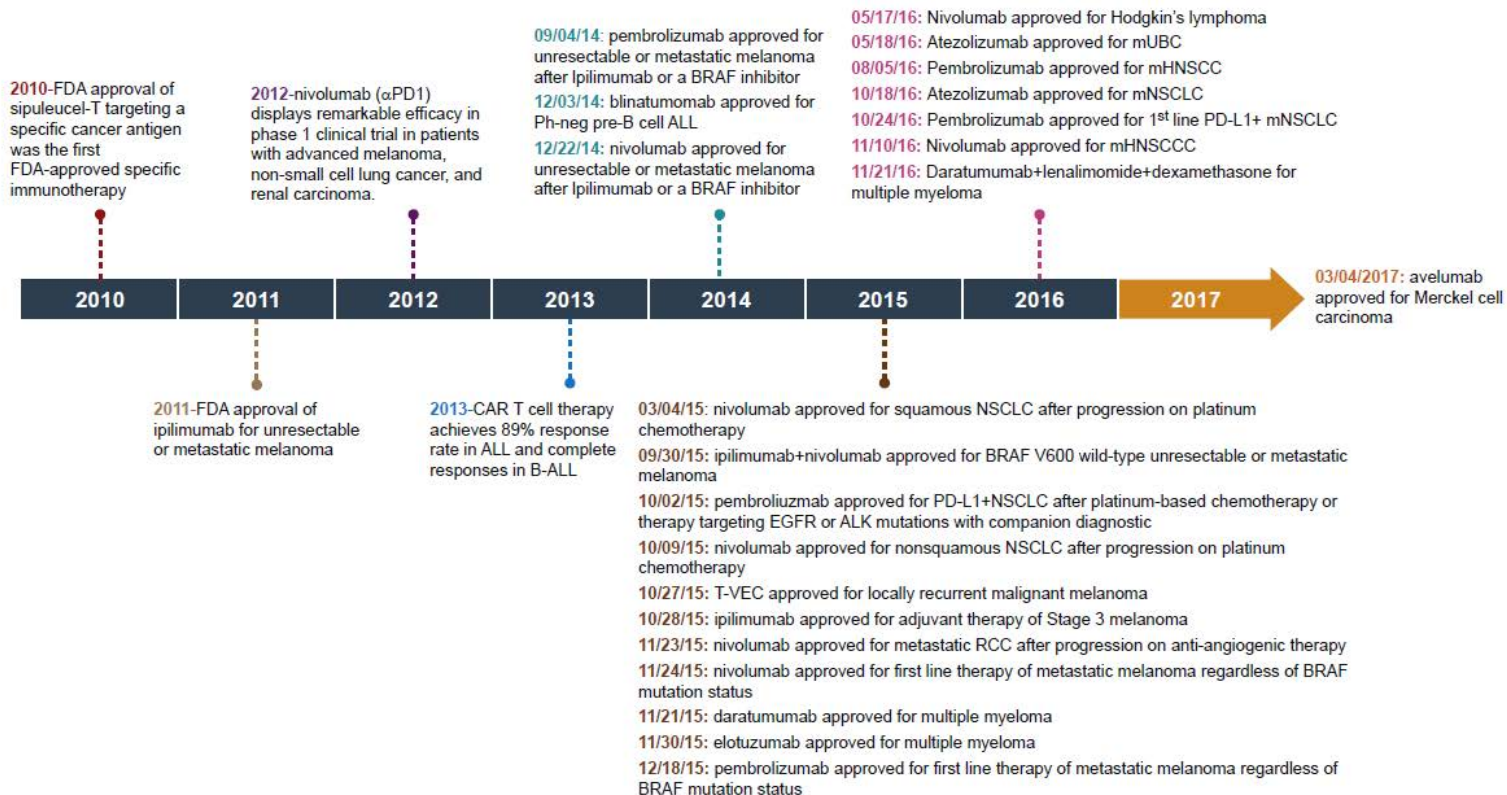
21-23 JUNE

SAN FRANCISCO

SUPPORTIVE CARE
MAKES EXCELLENT
CANCER CARE POSSIBLE



Increasing Approvals and Use of IO



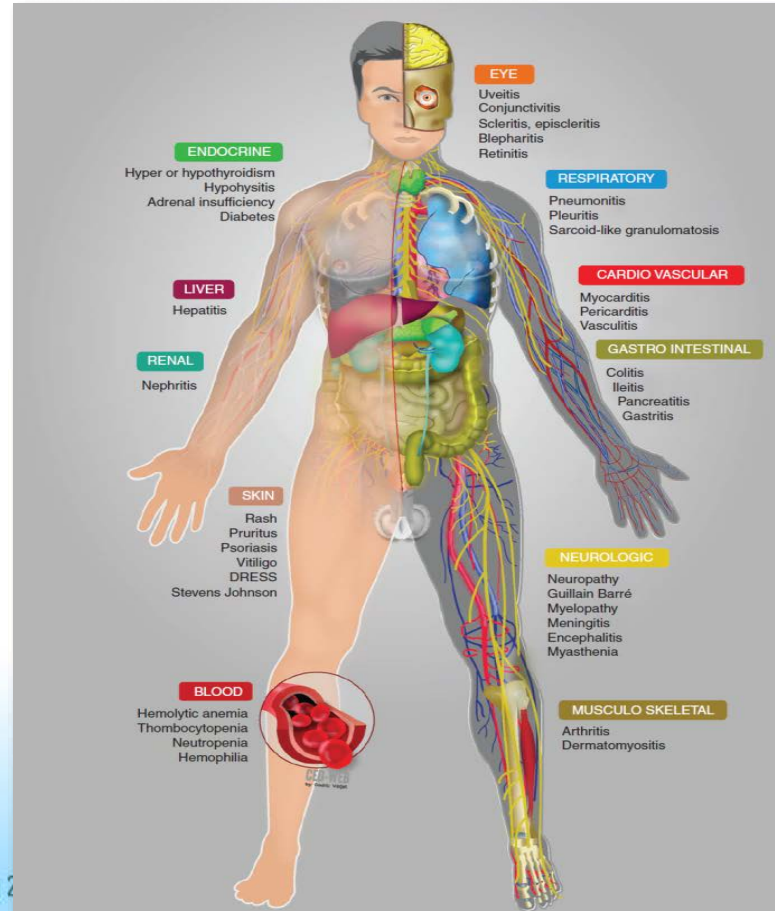
2019

21-23 JUNE
SAN FRANCISCO

SUPPORTIVE CARE
MAKES EXCELLENT
CANCER CARE POSSIBLE



Immune-related Adverse Events Affect Any Organ, Anytime



2019
21-23 JUNE
SAN FRANCISCO

SUPPORTIVE CARE
MAKES EXCELLENT
CANCER CARE POSSIBLE



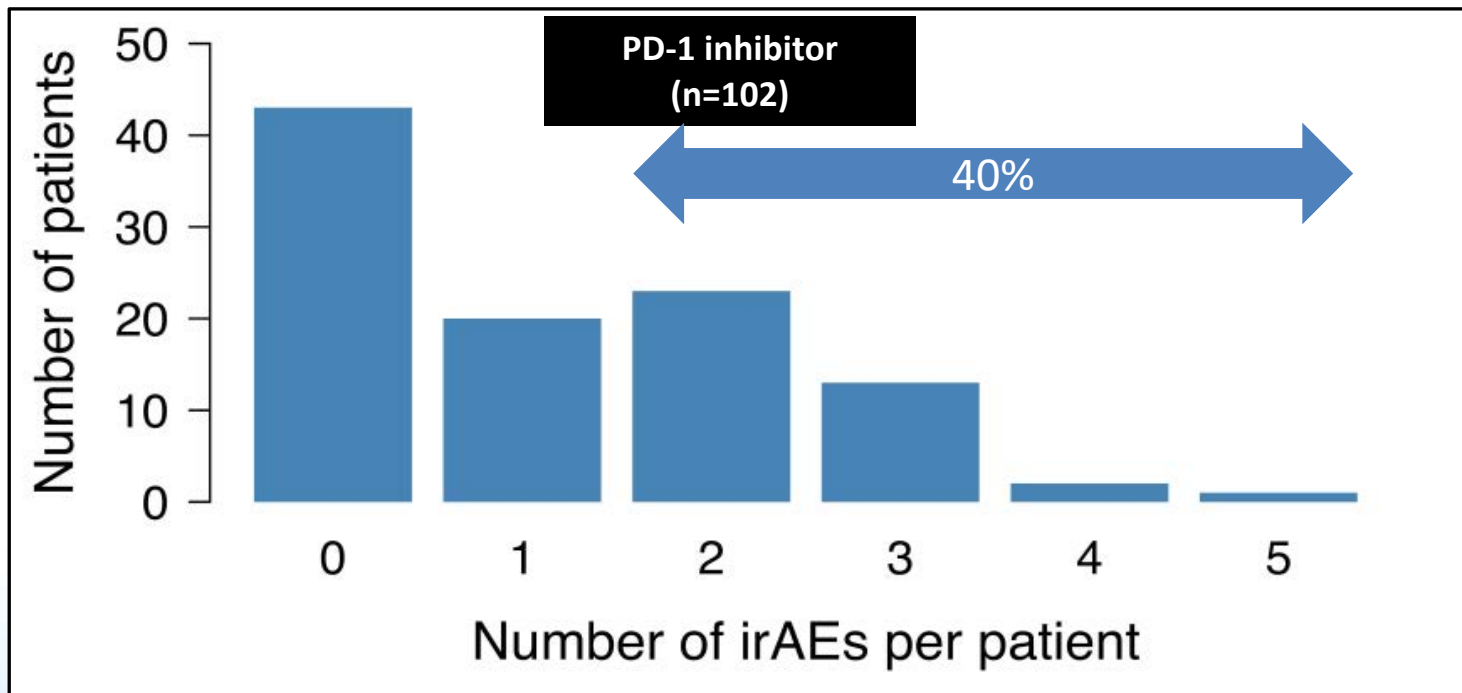
Clusters of irAEs: Misery Loves Company



2019

21-23 JUNE
SAN FRANCISCO

SUPPORTIVE CARE
MAKES EXCELLENT
CANCER CARE POSSIBLE



Immuno-Oncology Subgroup (2019-)

- Create a multidisciplinary team that brings together the best information and ideas
 - Develop educational sessions at MASCC conferences and research projects
 - Resource for information and contacts industry/academia
 - Yearly meeting



2019

21-23 JUNE
SAN FRANCISCO

SUPPORTIVE CARE
MAKES EXCELLENT
CANCER CARE POSSIBLE



Immuno-Oncology Subgroup (2019-)

- Chair: Bernardo L Rapoport, MD
brapoport@rosebankoncology.co.za
- Vice-Chair: Mario E Lacouture, MD
lacoutum@mskcc.org



2019

21-23 JUNE
SAN FRANCISCO

SUPPORTIVE CARE
MAKES EXCELLENT
CANCER CARE POSSIBLE



Agenda

Basic Mechanisms: B Rapoport, Rosebank

Recommendations: M Postow, MSKCC

Emergencies: T Cooksley, Manchester UF

GI Toxicities: M Dougan, MGH

Rheumatologic Toxicities: A Bass, HSS

Conclusion, Q&A: All Faculty



2019

21-23 JUNE

SAN FRANCISCO

SUPPORTIVE CARE
MAKES EXCELLENT
CANCER CARE POSSIBLE

